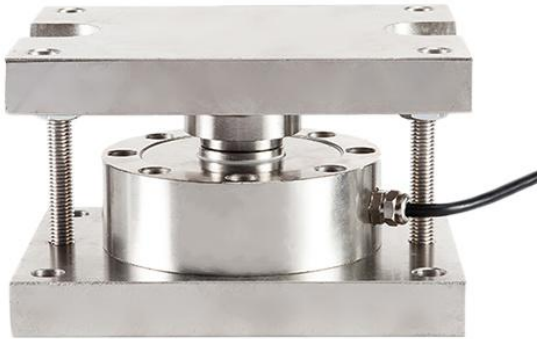


# Compression weighing modules



## Features

- Capacity 0.5t-100t
- Pancake type load cell
- Easy installation
- Nickel plated alloy steel

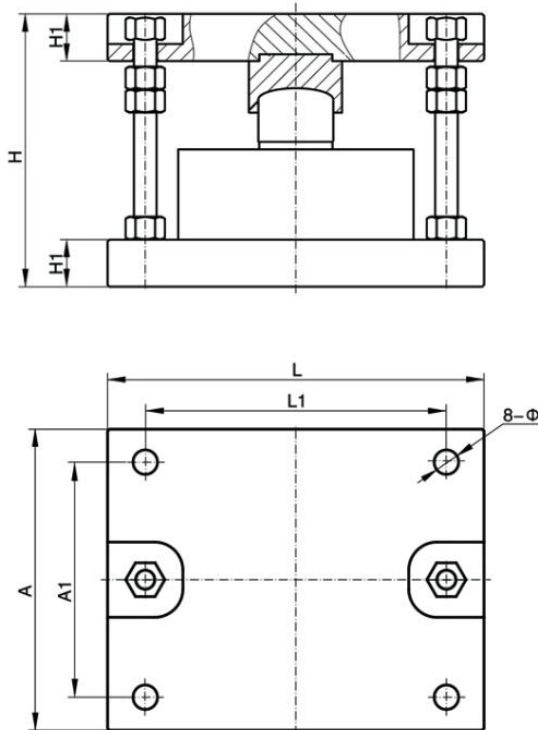
## Optional features

- Stainless steel construction

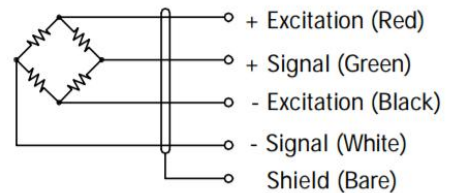
## DESCRIPTION

The ZMMLB weigh module is designed for spoke type load cells up to 100t capacities. Their typical features are low profile design and balanced load transfer. The Weighing module offers perfect solution especially for tanks, silos, high capacity conveyor scales.

## DIMENSIONS (mm)



	Dimension in mm						
Capacity	L	L1	A	A1	H	H1	Φ
0.5t-7t	160	135	115	90	100	20	11
10t-25t	200	160	160	125	145	25	13
30t-50t	240	200	180	145	175	30	17
60t-100t	300	260	240	200	240	35	17



## SPECIFICATIONS

PARAMETER	VALUE	UNIT
Standard capacities (E <sub>max</sub> )	0.5-100	T
Rated output-R.O.	2.0	mV/V
Zero balance	1	±% of rated output
Non linearity	0.05	±% of rated output
Hysteresis	0.03	±% of rated output
Non-repeatability	0.02	±% of rated output
Creep error (30 minutes)	0.03	±% of rated output
Zero return (30 minutes)	0.03	±% of rated output
Temperature effect on min. dead load output	0.0026	±% of rated output/°C
Temperature effect on sensitivity	0.0015	±% of rated output/°C
Compensated temperature range	-10 to +40	°C
Operating temperature range	-20 to +60	°C
Safe overload	150	% of R.C
Ultimate overload	200	% of R.C
Excitation, recommended	10	Vdc
Excitation, maximum	15	Vdc
Input resistance	720±20	Ohms
Output resistance	700±3	Ohms
Insulation resistance	5000	Mega-Ohms
Material	Alloy steel	
Protection class	IP66	

All specifications listed subject to change without notice.