

Fatigue rated load cell



Features

- Capacity 125KN
- High Natural Frequency
- 100 million fully cycles
- Nickel plated alloy steel

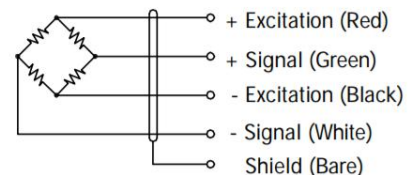
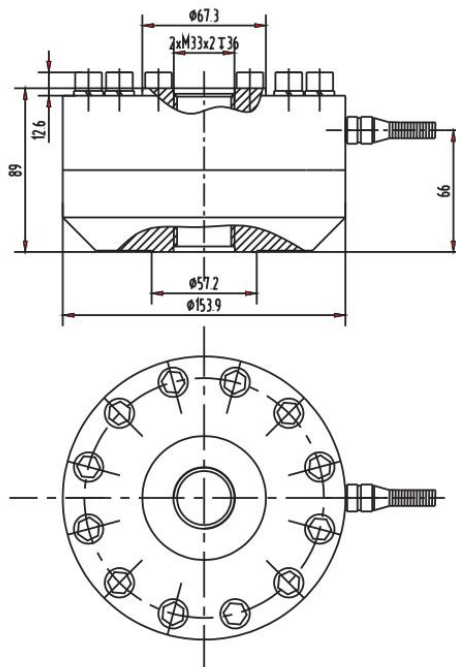
Optional features

- Stainless steel construction

DESCRIPTION

The ZMPL is fatigue rated load cells are specifically designed for component durability and fatigue test machines where highly cyclical loading is present. These rugged load cells are extremely resistant to extraneous bending and side loading forces. They are used for material testing, component life cycle testing and structural testing. All fatigue rated load cells are guaranteed against fatigue failure for 100 million fully reversed cycles.

DIMENSIONS (mm)



SPECIFICATIONS

PARAMETER	VALUE	UNIT
Standard capacities (E _{max})	125	KN
Rated output-R.O.	2.0	mV/V
Zero balance	1	±% of rated output
Non linearity	0.1	±% of rated output
Hysteresis	0.05	±% of rated output
Non-repeatability	0.05	±% of rated output
Creep error (30 minutes)	0.05	±% of rated output
Zero return (30 minutes)	0.05	±% of rated output
Temperature effect on min. dead load output	0.0026	±% of rated output/°C
Temperature effect on sensitivity	0.0015	±% of rated output/°C
Compensated temperature range	-10 to +40	°C
Operating temperature range	-20 to +60	°C
Safe overload	150	% of R.C
Ultimate overload	200	% of R.C
Excitation, recommended	10	Vdc
Excitation, maximum	15	Vdc
Input resistance	720±20	Ohms
Output resistance	700±3	Ohms
Insulation resistance	5000	Mega-Ohms
Material	Alloy steel	
Protection class	IP67	

All specifications listed subject to change without notice.