

Ring-Torsion Load Cell



Features

Capacity 1t-330t

RTN design

High accuracy

Compact size

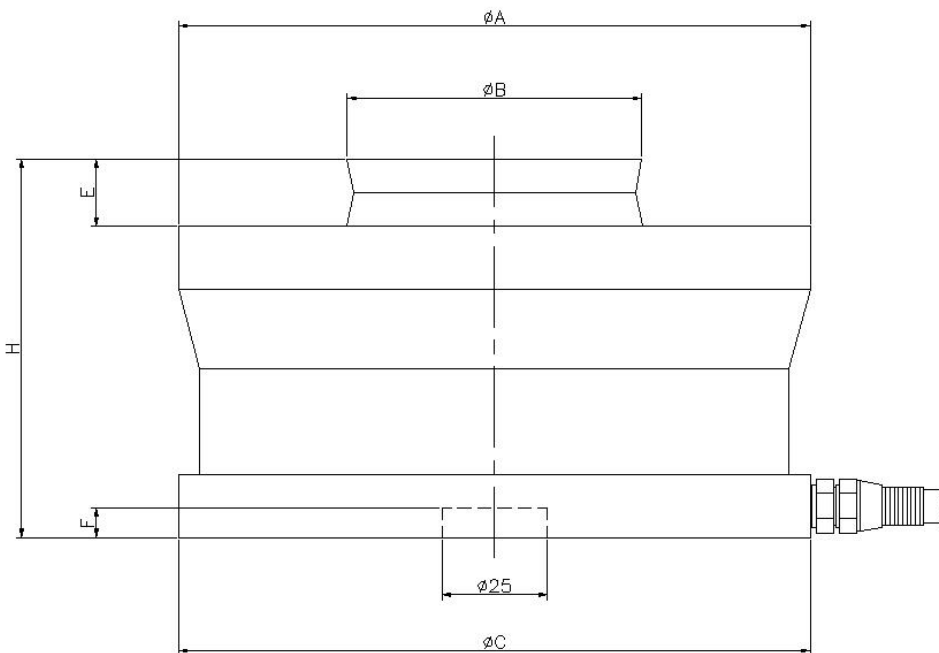
Optional features

Hermetically sealed available

DESCRIPTION

The ZMNH model load cell is designed as RTN structure. This structure has really high accuracy but compact size. Compared with other types, ZMNH is most effective and stable. The load cell is usually used with adapter kits which can be offered as well.

DIMENSIONS



Wiring diagram

+ Excitation	Red
- Excitation	Black
+ Signal	Green
- Signal	White

	ΦA	ΦB	ΦC	H	E	F
1t-5t	50	20	60	43	7.5	7
10t-22t	75	30	75	50	6.5	7
33t	95	40	95	65	10	7
47t	130	60	130	75	14	7
68t	130	60	130	85	14	7
100t	150	70	150	90	16	7
150t	150	70	150	100	16	7
220t	225	100	225	130	24	10
330t	225	100	225	145	24	10

SPECIFICATIONS

PARAMETER	VALUE	UNIT
Standard capacities (E _{max})	1-330	T
Rated output-R.O.	2.85	mV/V
Zero balance	1	±% of rated output
Non linearity	0.05	±% of rated output
Hysteresis	0.05	±% of rated output
Non-repeatability	0.03	±% of rated output
Creep error (30 minutes)	0.03	±% of rated output
Zero return (30 minutes)	0.03	±% of rated output
Temperature effect on min. dead load output	0.0026	±% of rated output/°C
Temperature effect on sensitivity	0.0015	±% of rated output/°C
Compensated temperature range	-10 to +40	°C
Operating temperature range	-20 to +60	°C
Safe overload	150	% of R.C
Ultimate overload	200	% of R.C
Excitation, recommended	10	Vdc
Excitation, maximum	15	Vdc
Input resistance	1450±10	Ohms
Output resistance	1400±3	Ohms
Insulation resistance	5000	Mega-Ohms
Material	Alloy steel	
Protection class	IP67	

All specifications listed subject to change without notice.