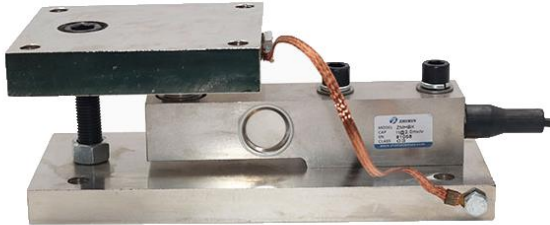


Compression weighing modules



Features

- Capacity 0.05t-20t
- Shear beam load cell
- Easy installation
- Nickel plated alloy steel

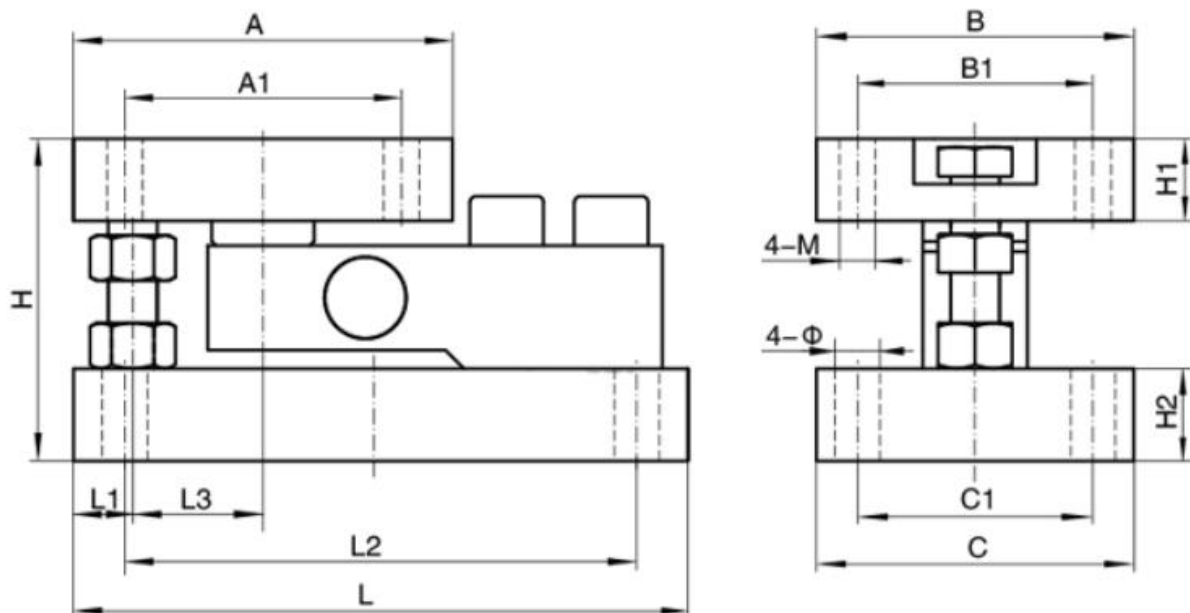
Optional features

- Stainless steel construction

DESCRIPTION

The ZMX1 weigh module is designed for shear beam load cells up to 20t capacities. Their typical features are low profile design and balanced load transfer. The Weighing module offers perfect solution especially for tanks, silos, high capacity conveyor scales.

DIMENSIONS (mm)



Capacity	A	A1	B	B1	C	C1	L	L1	L2	L3	H	H1	H2	M	Φ
0.25t-2t	114	89	114	89	114	89	178	13	152	45	105	25	20	10	11
3-5t	152	102	152	102	152	102	235	25	184	50	137	32	25	12	18
7t-10t	185	135	155	115	155	115	300	25	250	67.5	157	40	45	20	22
15t-20t	220	180	210	170	210	170	400	30	350	90	220	55	55	24	26

SPECIFICATIONS

PARAMETER	VALUE	UNIT
Standard capacities (E _{max})	0.05-20	T
Rated output-R.O.	2.0	mV/V
Zero balance	1	±% of rated output
Non linearity	0.03	±% of rated output
Hysteresis	0.03	±% of rated output
Non-repeatability	0.02	±% of rated output
Creep error (30 minutes)	0.03	±% of rated output
Zero return (30 minutes)	0.03	±% of rated output
Temperature effect on min. dead load output	0.0026	±% of rated output/°C
Temperature effect on sensitivity	0.0015	±% of rated output/°C
Compensated temperature range	-10 to +40	°C
Operating temperature range	-20 to +60	°C
Safe overload	150	% of R.C
Ultimate overload	200	% of R.C
Excitation, recommended	10	Vdc
Excitation, maximum	15	Vdc
Input resistance	370±20	Ohms
Output resistance	350±3	Ohms
Insulation resistance	5000	Mega-Ohms
Material	Alloy steel	
Protection class	IP67	

All specifications listed subject to change without notice.