

# Bending Beam Load Cell

## Features

- Capacity 5kg-1000kg
- High accuracy
- High stability
- Nickel plated alloy steel

## Optional features

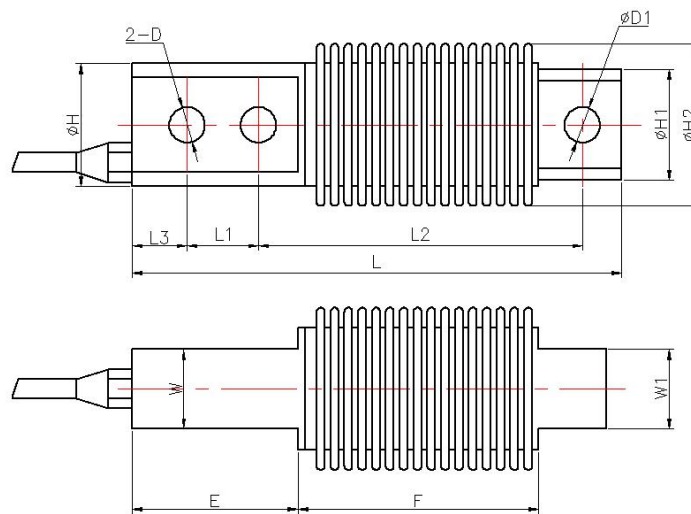
- Stainless steel



## DESCRIPTION

The ZMXW bending beam load cell is available in a wide range of capacities from 5kg through to 1000kg allowing for a multitude of applications. All stainless steel and hermetically sealed the compact size of the ZMWX makes it the ideal choice for multi-head weighing equipment and low capacity vessel and hopper weighing systems.

## DIMENSIONS (mm)



Wiring diagram  
 + Excitation Red  
 - Excitation Black  
 + Signal Green  
 - Signal White

|         | L   | L1 | L2  | L3 | ΦH | ΦH1 | ΦH2 | W  | W1 | ΦD   | ΦD1  | E  | F  |
|---------|-----|----|-----|----|----|-----|-----|----|----|------|------|----|----|
| 5-300kg | 123 | 18 | 82  | 13 | 32 | 28  | 45  | 20 | 20 | 9    | 9    | 45 | 59 |
| 500kg   | 123 | 18 | 82  | 13 | 32 | 28  | 45  | 20 | 20 | 10.5 | 10.5 | 45 | 59 |
| 1000kg  | 210 | 40 | 133 | 15 | 50 | 36  | 60  | 34 | 25 | 13   | 13.5 | 93 | 71 |

## SPECIFICATIONS

| PARAMETER                                   | VALUE      | UNIT                  |
|---|------------|-----------------------|
| Standard capacities (E <sub>max</sub> )     | 5-1000     | KG                    |
| Rated output-R.O.                           | 2.0        | mV/V                  |
| Zero balance                                | 1          | ±% of rated output    |
| Non linearity                               | 0.03       | ±% of rated output    |
| Hysteresis                                  | 0.03       | ±% of rated output    |
| Non-repeatability                           | 0.02       | ±% of rated output    |
| Creep error (30 minutes)                    | 0.03       | ±% of rated output    |
| Zero return (30 minutes)                    | 0.03       | ±% of rated output    |
| Temperature effect on min. dead load output | 0.0026     | ±% of rated output/°C |
| Temperature effect on sensitivity           | 0.0015     | ±% of rated output/°C |
| Compensated temperature range               | -10 to +40 | °C                    |
| Operating temperature range                 | -20 to +60 | °C                    |
| Safe overload                               | 150        | % of R.C              |
| Ultimate overload                           | 200        | % of R.C              |
| Excitation, recommended                     | 10         | Vdc                   |
| Excitation, maximum                         | 15         | Vdc                   |
| Input resistance                            | 380±10     | Ohms                  |
| Output resistance                           | 350±3      | Ohms                  |
| Insulation resistance                       | 5000       | Mega-Ohms             |
| Material                                    | AS/SS      |                       |
| Protection class                            | IP67       |                       |

All specifications listed subject to change without notice.